



## India Meteorological Department

(Ministry of Earth Sciences)

NATIONAL BULLETIN NO.: 05 (BOB/03/2023)

TIME OF ISSUE: 0145 HOURS IST

DATED: 02.08.2023

FROM: INDIA METEOROLOGICAL DEPARTMENT (FAX NO. 24643965/24699216/24623220)

TO: CONTROL ROOM, NDM, MINISTRY OF HOME AFFAIRS (FAX.NO. 23093750)

CONTROL ROOM NDMA (FAX.NO. 26701729)

CABINET SECRETARIAT (FAX.NO.23012284, 23018638)

PS TO HON'BLE MINISTER FOR S & T AND EARTH SCIENCES (FAX NO.23316745)

SECRETARY, MOES (FAX NO. 24629777)

H.Q. (INTEGRATED DEFENCE STAFF AND CDS) (FAX NO. 23005137/23005147)

DIRECTOR GENERAL, DOORDARSHAN (23385843)

DIRECTOR GENERAL, AIR (23421105, 23421219)

PIB MOES (FAX NO. 23389042)

UNI (FAX NO. 23355841)

D.G. NATIONAL DISASTER RESPONSE FORCE (NDRF) (FAX NO. 26105912, 2436 3260)

DIRECTOR, PUNCTUALITY, INDIAN RAILWAYS (FAX NO. 23388503)

CHIEF SECRETARY, WEST BENGAL (FAX NO. 033-22144328)

CHIEF SECRETARY, ODISHA (FAX NO. 0674-2536660)

CHIEF SECRETARY, ANDHRA PRADESH (FAX NO. 0863-2441029, 08645-246600)

ADMINISTRATOR, ANDAMAN & NICOBAR ISLANDS (FAX NO. 03192- 232656)

### Sub: Deep Depression over coastal Bangladesh and adjoining Gangetic West Bengal

The Deep Depression over coastal Bangladesh and neighbourhood moved west-northwestwards with a speed of 09 kmph during past 6 hours and lay centred at 2330 hours IST of 1st August, 2023 over coastal Bangladesh and adjoining Gangetic West Bengal near latitude 22.7°N and longitude 89.0°E, about 60 km northwest of Mongla (Bangladesh), 160 km east-northeast of Digha (West Bengal) and 70 km east-northeast of Kolkata (West Bengal).

It is likely to move west-northwestwards across Gangetic West Bengal and maintain its intensity of deep depression till early morning of today, the 2<sup>nd</sup> August. Thereafter, it is likely to weaken into a depression and continue to move west-northwestwards during subsequent 24 hours.

Forecast track and intensity are given in the following table:

Date/Time(IST)	Position (Lat. °N/ long. °E)	Maximum sustained surface wind speed (Kmph)	Category of cyclonic disturbance
01.08.23/2330	22.7/89.0	55-65 gusting to 75	Deep Depression
02.08.23/0530	23.2/87.8	50-60 gusting to 70	Deep Depression
02.08.23/1130	23.5/86.6	45-55 gusting to 65	Depression
02.08.23/1730	23.7/85.4	40-50 gusting to 60	Depression
02.08.23/2330	23.9/84.3	35-45 gusting to 55	Depression
03.08.23/1130	24.3/82.1	25-35 gusting to 45	Well Marked Low Pressure Area

Spatial rainfall distribution: Isolated: <25%, A few: 26-50%, Many: 51-75%, Most: 76-100%

Rainfall amount (mm): Heavy rain: 64.5 – 115.5, Very heavy rain: 115.6 – 204.4, Extremely heavy rain: 204.5 or more.

## Warnings:

### (i) Rainfall warning

**Odisha:** Light to moderate rainfall at most places with isolated heavy to very heavy rainfall over Odisha on 02<sup>nd</sup> & 3<sup>rd</sup> August and isolated extremely heavy rainfall also likely over north Odisha on 2<sup>nd</sup> August.

**Gangetic West Bengal:** Light to moderate rainfall at most places with isolated heavy to very heavy rainfall over Gangetic West Bengal on 2<sup>nd</sup> August.

**Jharkhand:** Light to moderate rainfall at most places with isolated heavy to very heavy rainfall on 2<sup>nd</sup> August.

**Chhattisgarh:** Light to moderate rainfall at most places with isolated heavy to very heavy rainfall over north Chhattisgarh on 2<sup>nd</sup> & 3<sup>rd</sup> August.

**Bihar:** Light to moderate rainfall at most places with isolated heavy to very heavy rainfall on 2<sup>nd</sup> & 3<sup>rd</sup> August.

**East Madhya Pradesh:** Light to moderate rainfall at most places with isolated heavy to very heavy rainfall on 2<sup>nd</sup> & 3<sup>rd</sup> August and isolated extremely heavy rainfall likely on 3<sup>rd</sup> August.

**West Madhya Pradesh:** Light to moderate rainfall at most places with isolated heavy to very heavy rainfall on 2<sup>nd</sup> & 3<sup>rd</sup> August.

**East Uttar Pradesh:** Light to moderate rainfall at most places with isolated heavy to very heavy rainfall on 2<sup>nd</sup> & 3<sup>rd</sup> August.

### (ii) Wind warning

Squally wind speed reaching 50-60 kmph gusting to 70 kmph very likely to prevail over North & adjoining Central Bay of Bengal and along & off Bangladesh-West Bengal coasts till today morning and wind speed 45-55 kmph gusting to 65 likely to prevail during early morning to noon of 2<sup>nd</sup> August and thereafter it will further decrease gradually.

Squally wind speed reaching 40-50 kmph gusting to 60 kmph very likely to prevailing along & off North Odisha coast till today morning and wind speed 35-45 kmph gusting to 55 likely to prevail during early morning to noon of 2<sup>nd</sup> August and thereafter it will further decrease gradually.

**(iii) Sea Condition:** Rough to very rough sea condition is prevailing over North & adjoining Central Bay of Bengal and along & off Bangladesh-West Bengal-North Odisha coasts and it is likely to continue till forenoon of today, the 2<sup>nd</sup> August.

### (iv) Fishermen Warning

Fishermen are advised not to venture into North & adjoining Central Bay of Bengal and along & off Bangladesh-West Bengal-North Odisha coasts till forenoon of today, the 2<sup>nd</sup> August.

### (v) Damage Expected over coastal districts of West Bengal

- Minor damage to loose / unsecured structures.
- Some breaches in Kutcha road due to flooding.
- Minor damage to Banana trees and near coastal agriculture.
- Damage to standing agriculture & horticulture crops.
- Minor damage to Kutcha embankments.

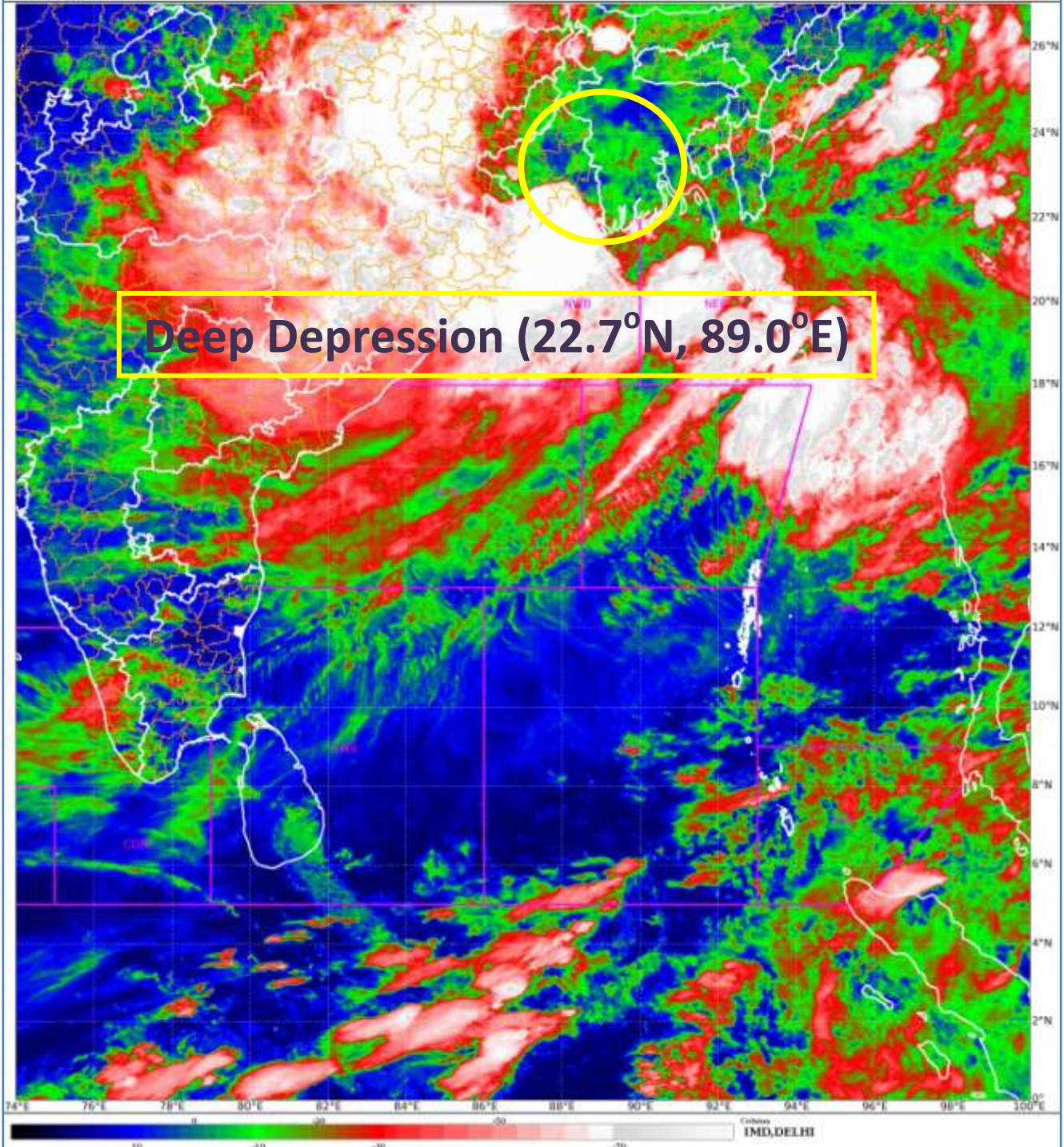
**The next bulletin will be issued at 0830 hrs IST of 2<sup>nd</sup> August, 2023.**

**(Shobhit Katiyar)**  
**Scientist-D, RSMC, New Delhi**

*Copy to: CRS, Pune/ACWC Kolkata/Chennai/CWC Bhubaneswar/CWC Visakhapatnam/MO Port Blair*

**Spatial rainfall distribution: Isolated: <25%, A few: 26-50%, Many: 51-75%, Most: 76-100%**  
**Rainfall amount (mm): Heavy rain: 64.5 – 115.5, Very heavy rain: 115.6 – 204.4, Extremely heavy rain: 204.5 or more.**





Spatial rainfall distribution: Isolated: <25%, A few: 26-50%, Many: 51-75%, Most: 76-100%  
Rainfall amount (mm): Heavy rain: 64.5 – 115.5, Very heavy rain: 115.6 – 204.4, Extremely heavy rain: 204.5 or more.





# OBSERVED AND FORECAST TRACK OF DEEP DEPRESSION OVER COASTAL BANGLADESH AND ADJOINING GANGETIC WEST BENGAL BASED ON 1800 UTC (2330 IST) OF 01<sup>ST</sup> AUGUST 2023.



**DATE/TIME IN UTC**  
**IST=UTC + 0530**  
**L: LOW PRESSURE AREA**  
**WML: WELL MARKED LOW PRESSURE AREA**  
**D: DEPRESSION (17-27 KT)**  
**DD: DEEP DEPRESSION (28-33 KT)**  
**CS: CYCLONIC STORM (34-47 KT)**  
**SCS: SEVERE CYCLONIC STORM (48-63KT)**  
**VSCS: VERY SEVERE CYCLONIC STORM (64-89 KT)**  
**ESCS: EXTREMELY SEVERE CYCLONIC STORM (90-119 KT)**  
**SuCS: SUPER CYCLONIC STORM ( $\geq$  120 KT)**

- LESS THAN 34 KT
- 34-47 KT
- $\geq$  48 KT
- OBSERVED TRACK
- FORECAST TRACK
- CONE OF UNCERTAINTY

**Spatial rainfall distribution: Isolated: <25%, A few: 26-50%, Many: 51-75%, Most: 76-100%**  
**Rainfall amount (mm): Heavy rain: 64.5 – 115.5, Very heavy rain: 115.6 – 204.4, Extremely heavy rain: 204.5 or more.**





**OBSERVED AND FORECAST TRACK ALONGWITH QUADRANT WIND DISTRIBUTION OF DEEP DEPRESSION OVER COASTAL BANGLADESH AND ADJOINING GANGETIC WEST BENGAL BASED ON 1800 UTC (2330 IST) OF**



DATE/TIME IN UTC  
 IST=UTC + 0530  
 L: LOW PRESSURE AREA  
 WML: WELL MARKED LOW PRESSURE AREA  
 D: DEPRESSION (17-27 KT)  
 DD: DEEP DEPRESSION (28-33 KT)  
 CS: CYCLONIC STORM (34-47 KT)  
 SCS: SEVERE CYCLONIC STORM (48-63KT)  
 VSCS: VERY SEVERE CYCLONIC STORM (64-89 KT)  
 ESCS: EXTREMELY SEVERE CYCLONIC STORM (90-119 KT)  
 SuCS: SUPER CYCLONIC STORM (≥ 120 KT)

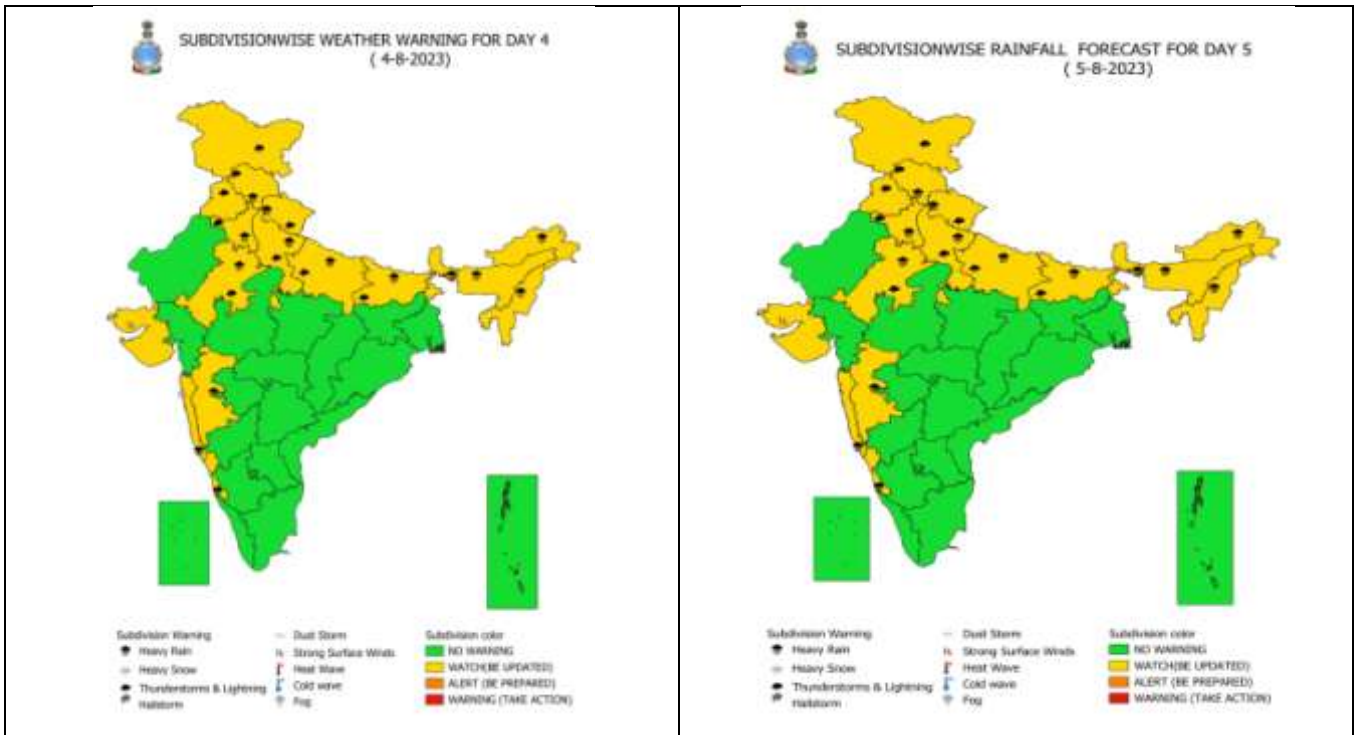
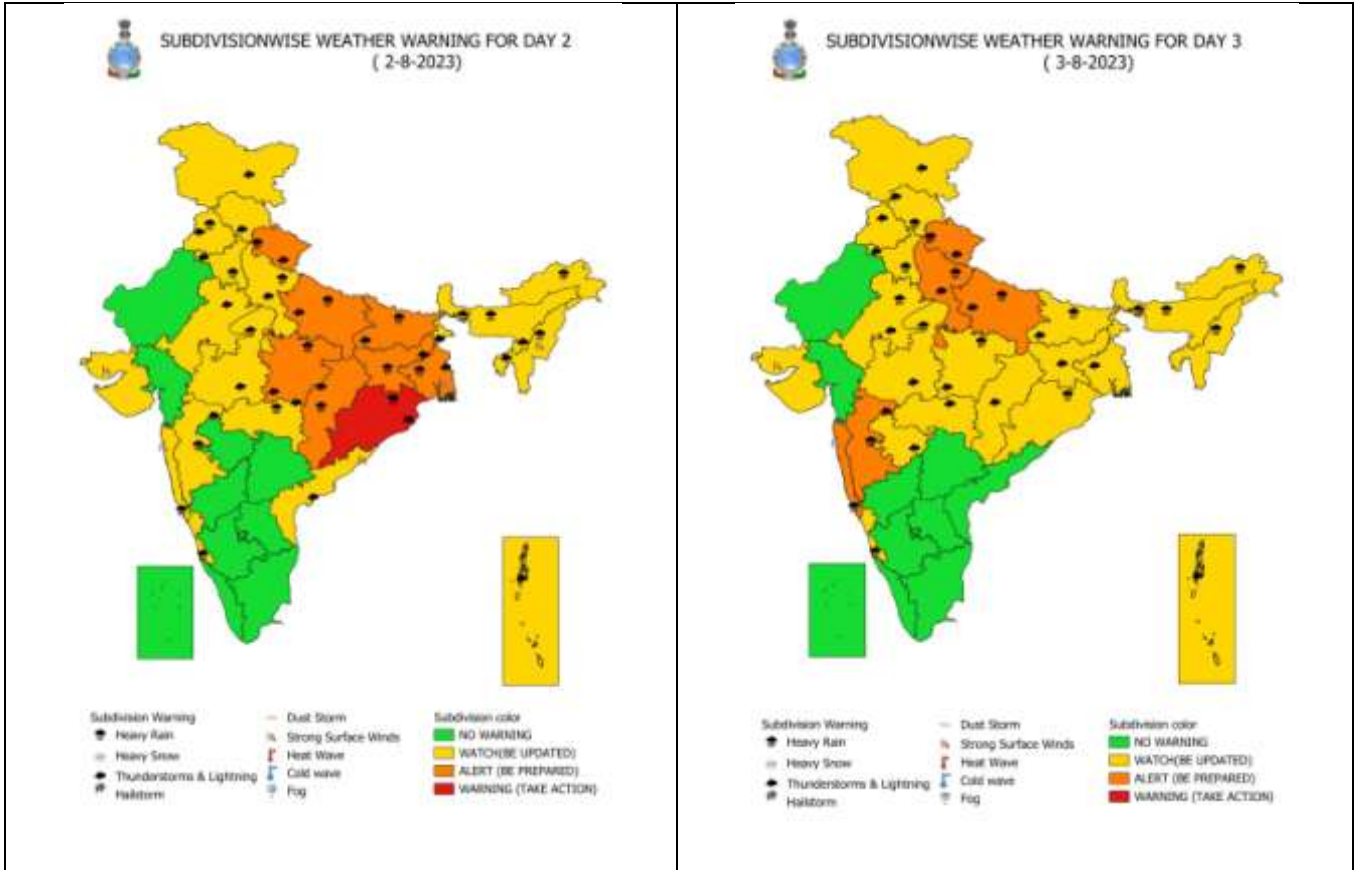
● LESS THAN 34 KT  
 ○ 34-47 KT  
 ○ ≥ 48 KT  
 — OBSERVED TRACK  
 — FORECAST TRACK  
 — CONE OF UNCERTAINTY  
 AREA OF MAXIMUM SUSTAINED WIND SPEED:  
 ■ 28-33 KT (52-61 KMPH)  
 ■ 34-49 KT (62-91 KMPH)  
 ■ 50-63 KT (92-117 KMPH)  
 ■ ≥ 64 KT (≥118 KMPH)

**IMPACT OVER THE SEA**

MSW (knot/kmph)	Impact	Action
28-33 (52-61)	Very rough seas	Total suspension of fishing operations
34-49 (62-91)	High to very high seas	Total suspension of fishing operations
50-63 (92-117)	Very high seas	Total suspension of fishing operations
≥ 64 (≥118)	Phenomenal	Total suspension of fishing operations

Spatial rainfall distribution: Isolated: <25%, A few: 26-50%, Many: 51-75%, Most: 76-100%  
 Rainfall amount (mm): Heavy rain: 64.5 – 115.5, Very heavy rain: 115.6 – 204.4, Extremely heavy rain: 204.5 or more.

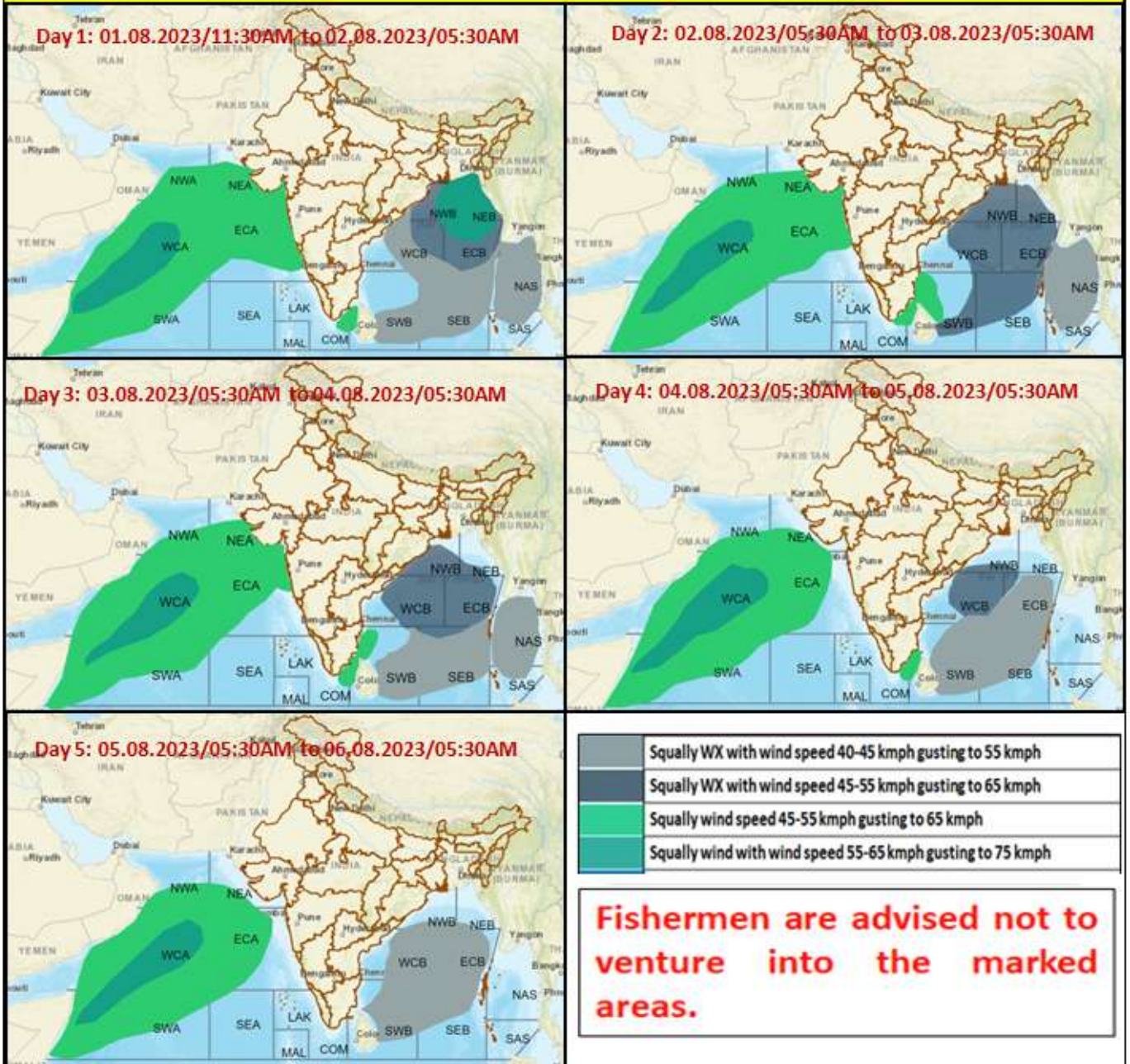
# Weather Warning Graphics



**Spatial rainfall distribution: Isolated: <25%, A few: 26-50%, Many: 51-75%, Most: 76-100%**  
**Rainfall amount (mm): Heavy rain: 64.5 – 115.5, Very heavy rain: 115.6 – 204.4, Extremely heavy rain: 204.5 or more.**



## Fishermen warning graphics



Spatial rainfall distribution: Isolated: <25%, A few: 26-50%, Many: 51-75%, Most: 76-100%  
 Rainfall amount (mm): Heavy rain: 64.5 – 115.5, Very heavy rain: 115.6 – 204.4, Extremely heavy rain: 204.5 or more.



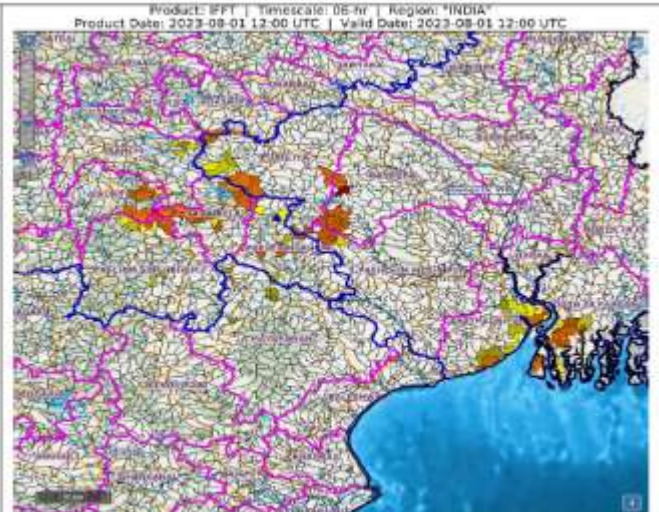
## Flash Flood Guidance

### **Observed Flash Flood Threat (IFFT) till 1730 IST of 01-08-2023 :**

**Low to Moderate flash flood threat** observed over few watersheds & neighbourhoods of following Met Sub-divisions during last 6 hours.

**Gangetic West Bengal** - Bankura, Eastmednipur, Puruliya and South 24 Parganas districts.

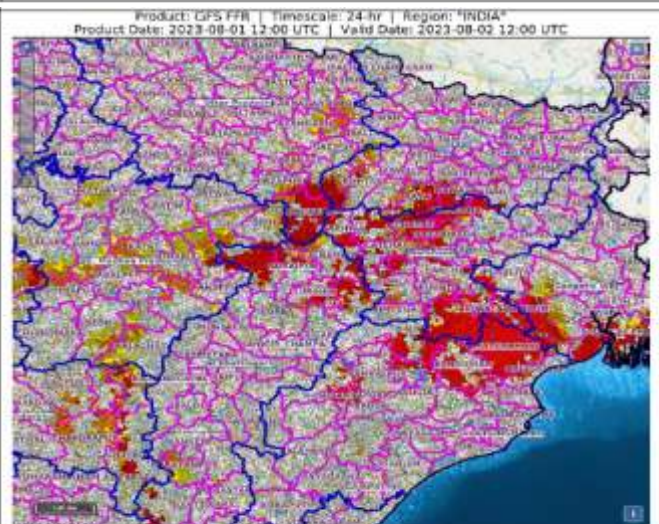
**Jharkhand** - Bokaro, East Singhbhum, Khunti, Ranchi, Saraikela and West Singhbhum districts.



### **24 hours Outlook for the Flash Flood Risk (FFR) till 1730 IST of 02-08-2023 :**

**Moderate flash flood risk** likely over few watersheds & neighbourhoods of **Northern parts of Odisha adjoining Gangetic West Bengal, Jharkhand adjoining Northern parts of Chhattisgarh, South Eastern parts of East Uttar Pradesh and East Madhya Pradesh** Met Sub-divisions during next 24 hours.

Surface runoff/ Inundation may occur at some fully saturated soils & low-lying areas over AoC as shown in map due to expected rainfall occurrence in next 24 hours.



**Spatial rainfall distribution: Isolated: <25%, A few: 26-50%, Many: 51-75%, Most: 76-100%**  
**Rainfall amount (mm): Heavy rain: 64.5 – 115.5, Very heavy rain: 115.6 – 204.4, Extremely heavy rain: 204.5 or more.**